

SYDNEY'S NO. 1 EDGE PROTECTION PROVIDER

Edge Protection Hire

www.edgeprotectionhire.com.au



Table of Contents

Bracket Systems	3
· Pole-Up System	3
· Surface Mount System	4
· Parapet Clamp	5
· Slab Clamp	6
· Commercial Bracket	7
· Handrail Post System	8
· Tile Bracket	9
· Wall Mount Bracket	10
· Tube & Fitting	11
Components	12
About Us	14
Our Way	15
Testimonials	16
Our Partners	17
Contact Info	18

Bracket Systems

TYPE 1

Pole up

BSBS Bracket

Great for new housing, reroofing, or projects where you need complete roof access. The EBR bracket uses surface pressure to push against the underside of the soffit or eaves. Thus meaning no drilling and no patch-ups!

Being able to install this system completely from the ground means the risks associated with working from heights is minimised.

Compliant with the AS/NZS 4994.1 Temporary Edge Protection.



**MINIMISE THE
RISK OF FALLING
FROM HEIGHTS
WITH THIS SYSTEM**



TYPE 2

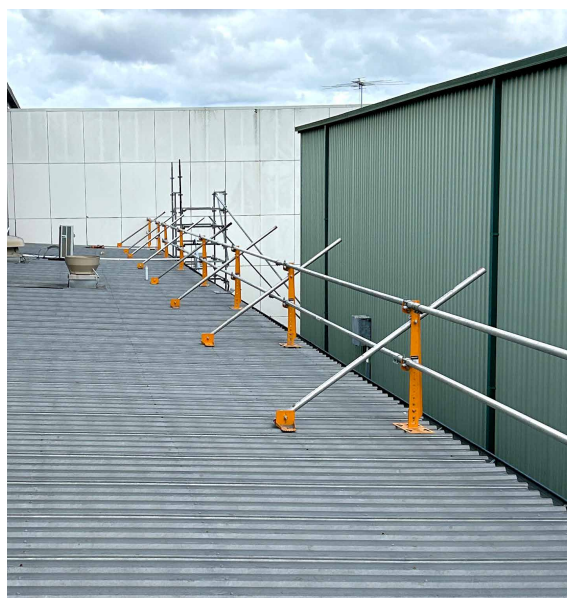
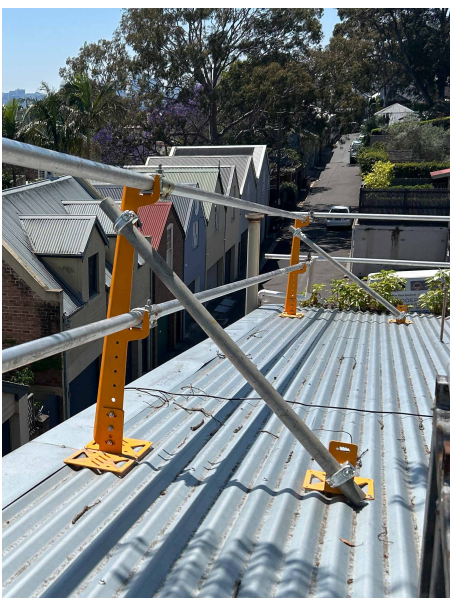
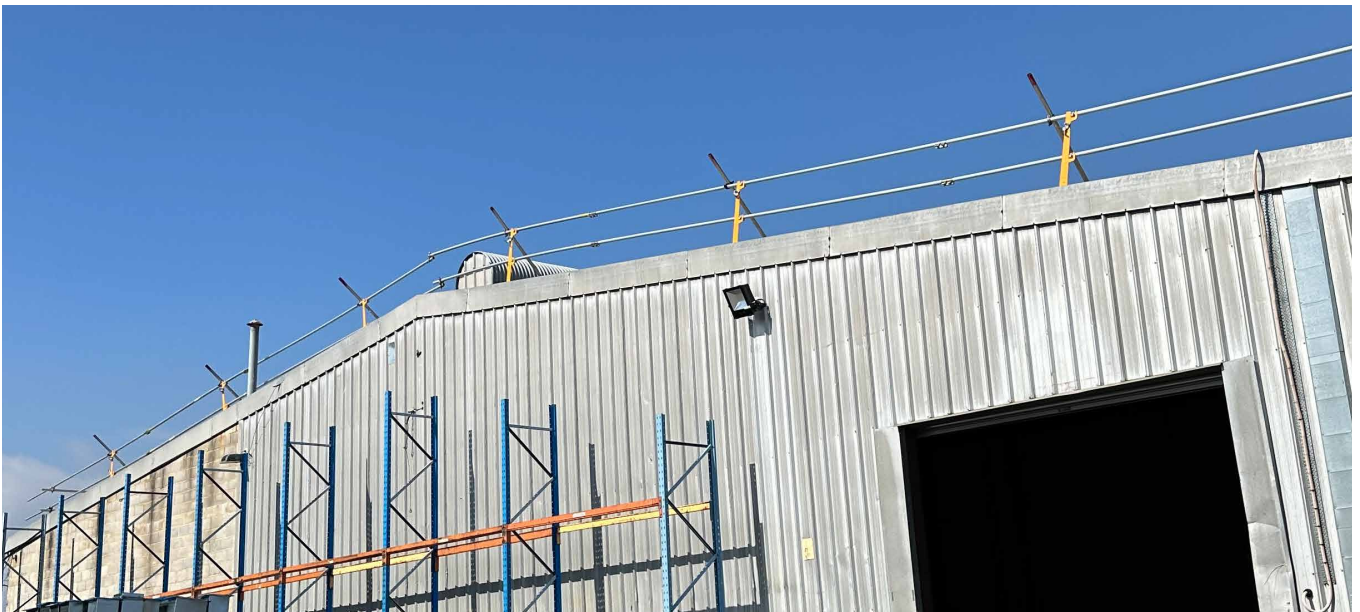
Surface Mount

EBCS Bracket

Great for bigger projects where needing to get to the roof edge is not required. This Bracket uses existing fasteners on any roof profile.

This versatile bracket can also be used as a floor mount bracket fastening into concrete, then being used for stairwells, voids, and separating people from hazards.

Compliant with the AS/NZS 4994.1 Temporary Edge Protection.



**GREAT FOR
BIGGER
PROJECTS
& VERY
VERSATILE**

TYPE 3

Parapet Clamp

EBCP Bracket

This genius piece of engineering clamps onto existing parapet walls or concrete hobs.

Quick to install, this system reduces install time whilst working at height. This bracket is one of the most popular we stock at Edge Protection Hire.

Compliant with the AS/NZS 4994.1 Temporary Edge Protection.



**THE MOST
POPULAR &
QUICK TO
INSTALL**



TYPE 4

Slab Clamp

EBCP Bracket

This genius piece of engineering clamps onto the edge of concrete slabs.

Quick to install, this system reduces install time whilst working at height. This bracket is one of the most popular we stock at Edge Protection Hire.

Compliant with the AS/NZS 4994.1 Temporary Edge Protection.



**REDUCES INSTALL
TIME WHILST
WORKING AT
HEIGHT**

TYPE 5

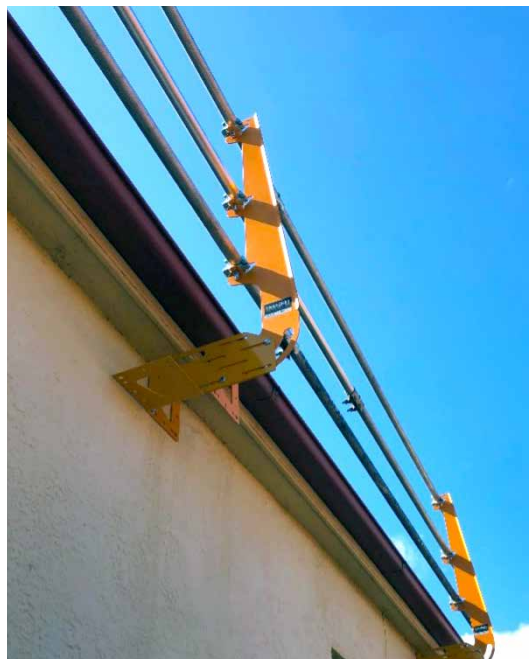
Commercial Bracket

EBC Bracket

Don't be thrown off by the name this bracket can be used for both residential and commercial builds. With a max of 5m between brackets this system minimizes patch ups. Used with a multibeam bracket this system can be used in multiple ways.

This bracket allows for roof overhangs and gutters, this bracket is ideal for most surface mounting substrates.

Compliant with the AS/NZS 4994.1 Temporary Edge Protection.



**IDEAL
BRACKET
FOR SURFACE
MOUNTING
SUBSTRATES**



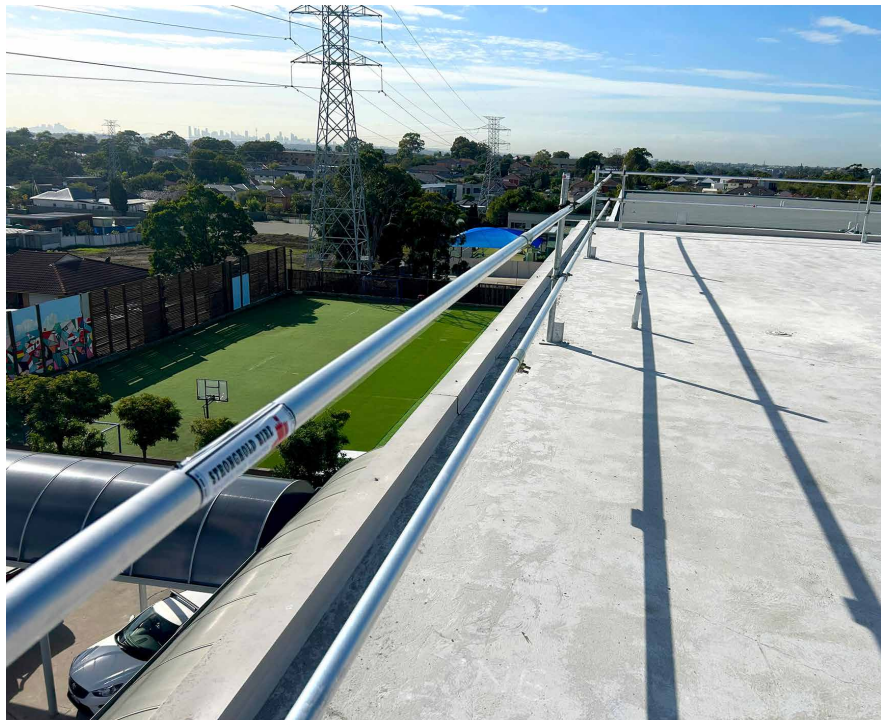
TYPE 6

Handrail Post System

This system can be used for both fall protection and void protection.

Used with scaffolding ledgers or tube and fittings this system can span short distances or long runs.

Fixing into rated concrete or timber this system is better suited to large commercials but can also be used on small jobs too.



**FULLY ADJUSTABLE
TO SUIT THE
SMALLEST OR
LARGEST OF JOBS**



TYPE 7

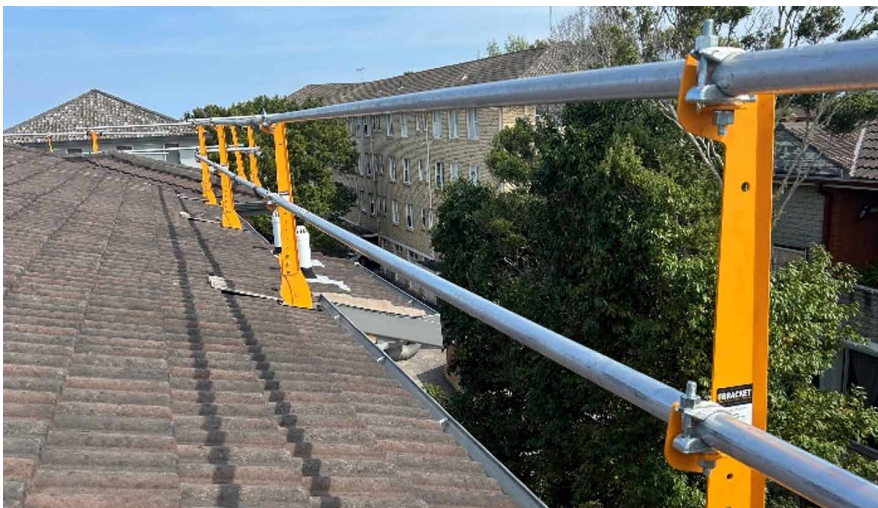
Tile Bracket

SMSTB

These brackets can be installed on roofs of up to 35 degrees. The Tile Bracket can be adjusted to suit both 90mm x 35/45mm or 100mm x 35/45mm trusses/rafters.

This system can be used for tile roof repairs or new tile roofs. Requiring only 1 tile per bracket to be left out and installed once removed.

Compliant with the AS/NZS 4994.1 Temporary Edge Protection.



**IDEAL BRACKET
FOR TILE ROOF
REPAIRS OR
NEW TILE
ROOFS**

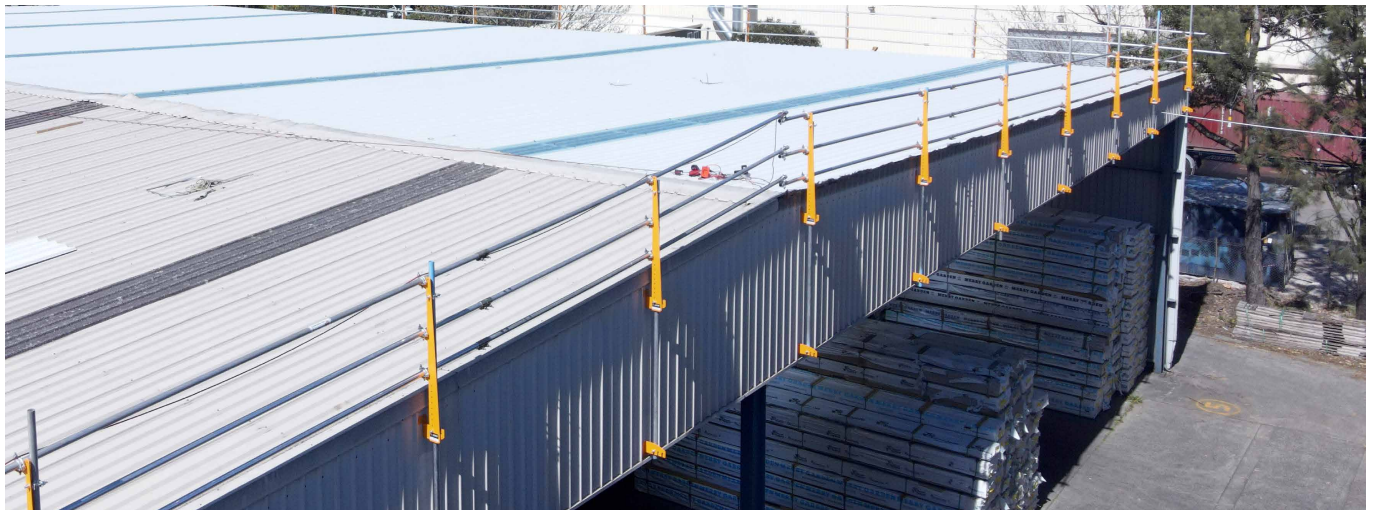
TYPE 8

Wall Mount Bracket

EBW Wall Mount

The Wall Mount system has been made to fix into to steel wall framing members with or without the cladding in place.

This system is great for large commercial sheds or any steel frame structures for that matter.



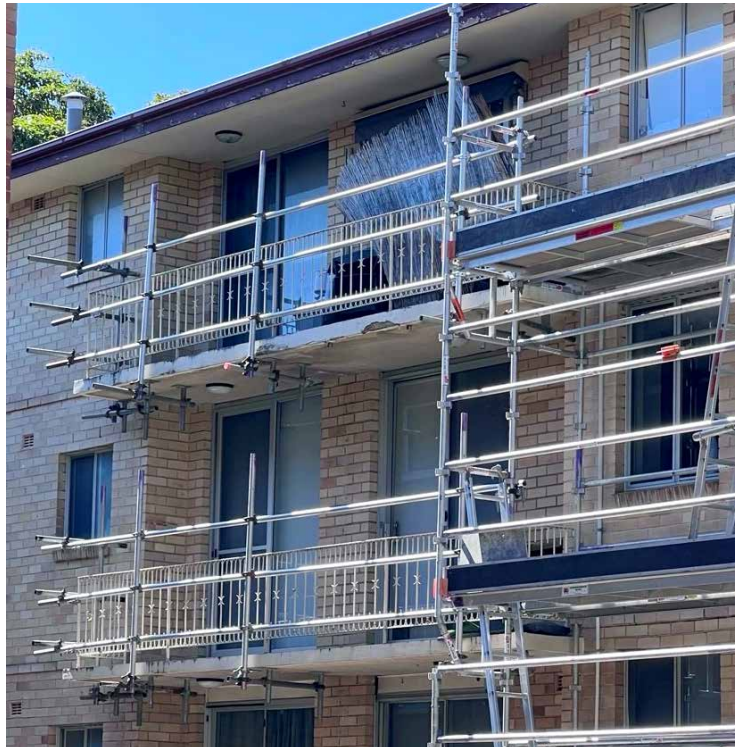
**IDEAL BRACKET
FOR LARGE
COMMERCIAL
SHEDS**

TYPE 9

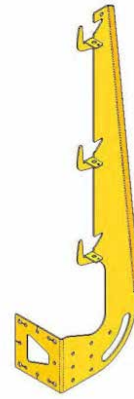
Tube & Fitting

We have an in-depth and strong knowledge of scaffold tube and fitting so we can lean on this knowledge to implement a tube and fitting solution.

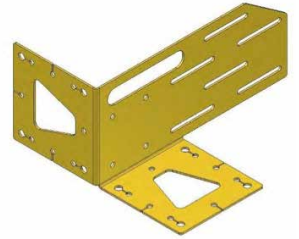
This means we can design and implement an edge protection system when a typical bracket may not be practicable.



Components



EBC Bracket



EBC Multi Bracket



HC
(half clamp)



PT
(putlog
coupler)



SW
(swivel
coupler)



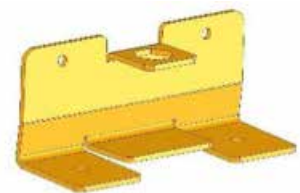
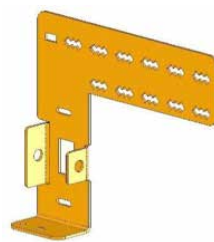
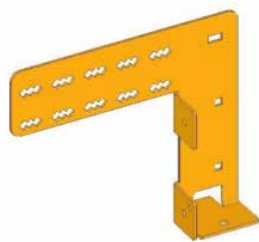
JNR
(external
joiner)



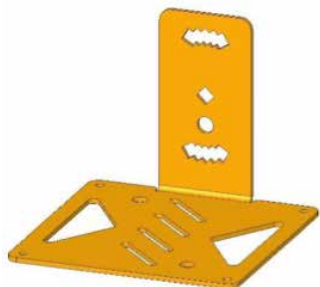
90DC
(90 degree
coupler)



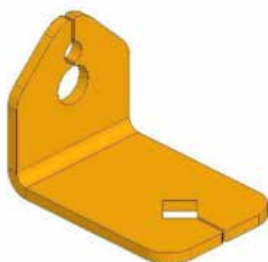
EBCP



These 3 parts make up the main components of the parapet clamp.



EBCS Surface Mount



Toe Board Mount



T6 grade aluminium tube meeting test requirements under AS/NZS4994.1:2009 Standard.



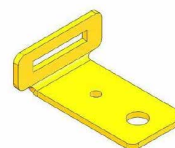
EBR
Bracket



EBRMB
(EBR multi
bracket)



BJACK
(adjustable
base jack)



GEM
(gable end
mount)

About Us



We have over 25 years of combined experience in the scaffolding and labour hire.

Our Background

Our clients range from government bodies and large construction companies through to smaller sub-contractors such as painters, plumbers, lift installers, electricians, roof tilers, and renderers. Alongside these, a large percentage of our customers are homeowners carrying out both minor and major renovations. Due to the growing demand and the change of legislation the natural progression was to add roof edge protection to the list of services we offer. Since we first expanded, we have invested heavily in staff training ensuring our high standards were transferred across and new skills learned and developed. We have also invested heavily in what we believe is one of the best edge rail systems in Australia.

Tested to meet the AS/NZS4994.2 the Temporary Edge Protection General Requirements standard the E-Bracket® systems are sure to keep you safe.

Our Aim

We aim to provide safety solutions to the people of NSW. With our vision, we aim to keep those at high risk safe. We want to ensure everyone goes home as they came.

Careers

Edge Protection Hire is always looking for the next generation of safety systems installers. If you have scaffolding or edge rail experience fill in the form and we will get in touch as soon as possible. Full Training will be given to the right candidate with the opportunity to gain nationally recognized government body qualifications.

[APPLY TO WORK WITH US >](#)

Our Way



There are always right and wrong ways to do things. At Edge Protection Hire, we believe in doing things the right way, the safest way, and the most efficient way.

We make sure each project follows the New South Wales Safe Works Method.

This includes but is not limited to:

1. Site Visit

Where reasonably practicable we undertake a site visit before any work is carried out.

2. Risk Assessment

After conducting a site visit, we complete a full risk assessment before any work goes ahead to ensure people, the environment, and equipment is not put at risk.

3. Safe Work Method Statement

As part of the risk assessment, we complete S.W.M.S. These are site-specific and each installation team and site team sign up to these to ensure they understand the methods and procedures before starting any work on site.

4. Toolbox Talk & Emergency Plan

On arrival at the site, our team supervisor conducts toolbox talks on the morning of the installation after the team has read through the S.W.M.S. In the toolbox talk, they outline the emergency plan and what hazards to look out for amongst other key information.

5. Installation

Only after all these prior steps have been completed do we start the installation.

6. Handover Certificate

After the installation is complete and we are happy that it is fully compliant with the AS/NZS4994.2 standard do we then sign off the edge rail system and issue the handover certificate.

7. Removal & Clean-up

We then ensure no waste is left on site. The hire of the edge rail then starts until we are called back for the removal.

Testimonials



“Recently, I had the opportunity to engage their (EPH) services for edge protection on a school building roof, and I was thoroughly impressed with the quality of their work.

From the outset, Edge Protection (Hire) demonstrated a high level of professionalism, attention to detail, and commitment to safety. Their team arrived on time, were courteous and respectful, and worked efficiently to install the edge protection system. I was particularly impressed with their ability to complete the project within the agreed-upon timeframe and budget, without compromising on the quality of their work.

Throughout the project, Edge Protection Hire maintained a high level of communication with me and the school staff, ensuring that we were kept up to date with progress and any issues that arose. They also demonstrated a strong commitment to safety, taking all necessary precautions to ensure that the work was carried out in accordance with industry standards and best practices.

Overall, I would highly recommend Edge Protection Hire ’ for any edge protection projects. Their commitment to quality, safety, and customer service is unparalleled, and I have no doubt that they will continue to be a valued partner for any future projects.”

Stephen Deasy, Full Spec Group

“You and your team made the whole process easy. Our job was a bit fiddly in terms of timing with other trades and you knocked it out of the park.”

Steven

Proud To Partner With:

As well as the companies listed below we also work with the NSW Government, schools, court houses and hospitals along with our residential clients.





Get In Touch

Contact us if you require more information

 02 8985 2020

 info@edgeprotectionhire.com.au

 Site 06506, Ulm Avenue, Mascot, NSW 2020

www.edgeprotectionhire.com.au

EDGE 
PROTECTION HIRE